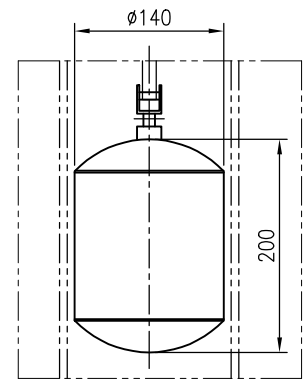
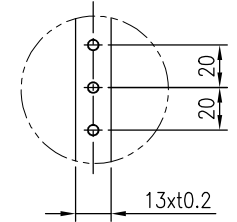
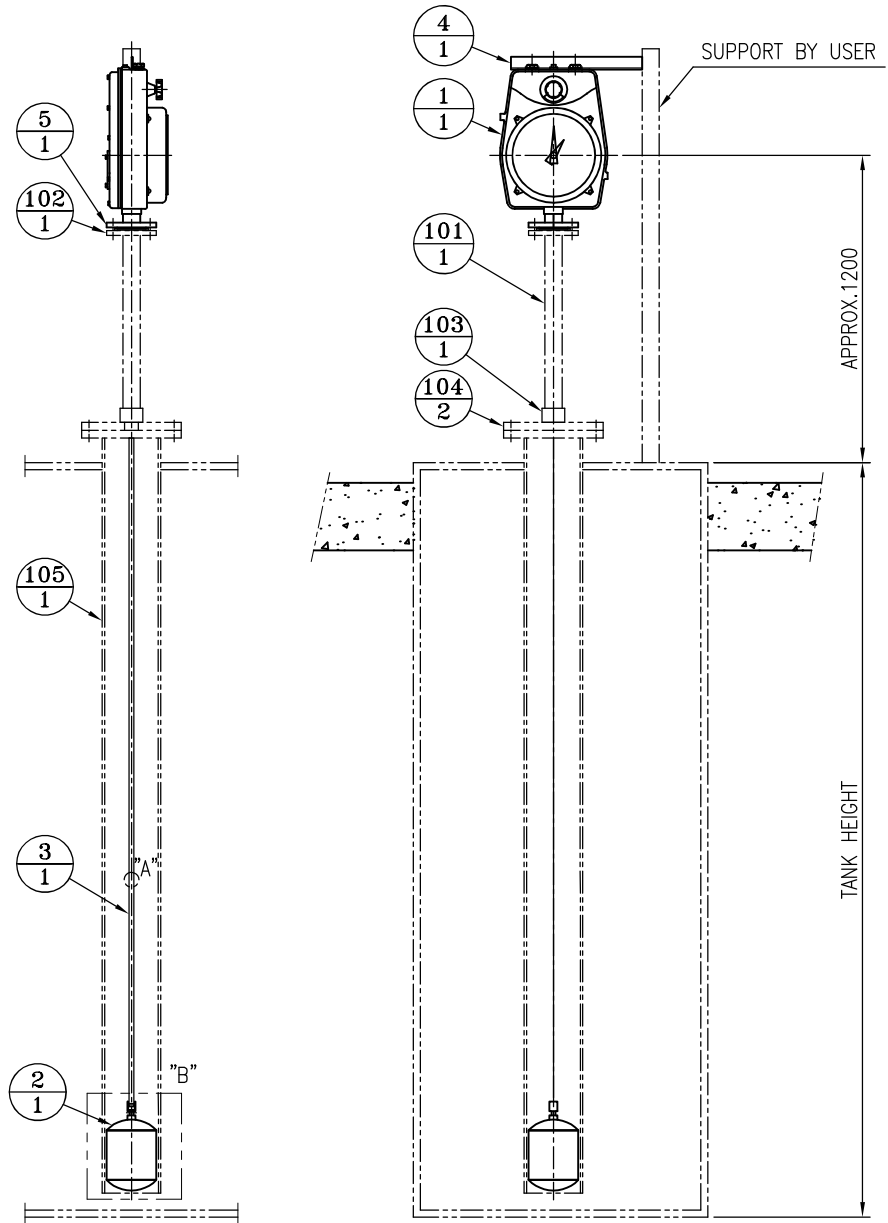


FOR	TANK LEVEL GAUGE	
MOUNTING	TOP MOUNTING	
ENCLOSURE	WEATHER PROOF	
MAX. PRESSURE	ATM	kgf/cm ²
MAX. TEMP.	150	°C

NO.	ITEM TO BE PREPARED BY USER		
	DESCRIPTION	MATERIAL	REMARKS
101	40A PIPE		
102	40A FLANGE		
103	40A SOCKET		
104	150A FLANGE		
105	150A GUIDE PIPE		

NO.	ITEM TO BE SUPPLIED BY HITROL		
	DESCRIPTION	MATERIAL	REMARKS
1	GAUGE HEAD	ALC	
2	FLOAT	316L SS	
3	MEASURING TAPE	316L SS	
4	GAUGE SUPPORT	<input type="checkbox"/> C.S. <input type="checkbox"/> 304 SS <input type="checkbox"/> 316L SS	
5	CONNECTION FLANGE	<input type="checkbox"/> ALC <input type="checkbox"/> 304 SS <input type="checkbox"/> 316L SS	40A JIS 10K RF

TAG NO.	Q'TY	MEASURING RANGE(mm)	SCALE RANGE(mm)	TANK HEIGHT(mm)



NOTE
1. GENERAL TOLERANCE IS ±3mm EXCEPT AS NOTED.

HITROL CO., LTD.						SCALE	UNIT	SHEET NO.
						N.S	mm	/
TITLE						PROJECT		
TANK LEVEL GAUGE						DRAWING NO.		
HLT-1210						HLT1210-BBA-01		
NO.	DATE	REVISION	REV'D BY	CHK'D BY	APP'D BY			
	2024.08.08	1ST ISSUE	S H KIM	B S SUNG	J S YANG			

This drawing is the property of HITROL and shall not be copied, communicated, or given for tiers except with our written permission.