

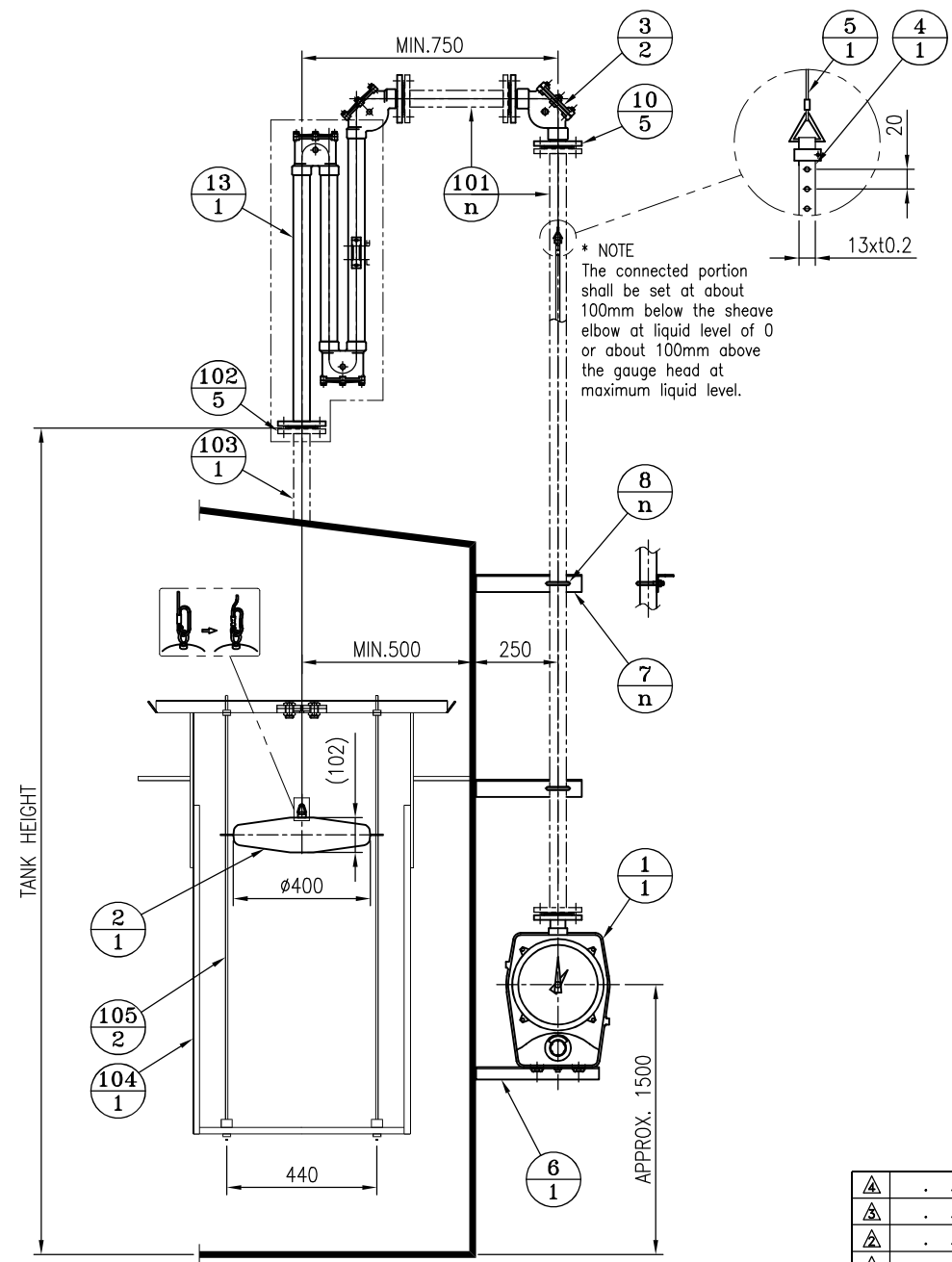
FOR	TANK LEVEL GAUGE	
MOUNTING	SIDE MOUNTING	
ENCLOSURE	WEATHER PROOF	
MAX. PRESSURE	ATM	kgf/cm ²
MAX. TEMP.	150	°C

NO.	ITEM TO BE PREPARED BY USER	
	DESCRIPTION	REMARKS
101	1-1/2" PIPE	
102	1-1/2" FLANGE	for connection
103	1-1/2" NOZZLE PIPE	for connection
104	FLOATING TANK	
105	GUIDE ROD	

NO.	ITEM TO BE SUPPLIED BY HITROL		
	DESCRIPTION	MATERIAL	REMARKS
1	GAUGE HEAD	ALC	
2	FLOAT	<input type="checkbox"/> 304 SS <input checked="" type="checkbox"/> 316L SS	
3	SHEAVE ELBOW	<input type="checkbox"/> ALC <input checked="" type="checkbox"/> 304 SS	
4	MEASURING TAPE	316L SS	
5	MEASURING WIRE	316 SS	
6	GAUGE SUPPORT	<input checked="" type="checkbox"/> C.S <input type="checkbox"/> 304 SS <input type="checkbox"/> 316L SS	
7	PIPE SUPPORT	<input checked="" type="checkbox"/> C.S <input type="checkbox"/> 304 SS <input type="checkbox"/> 316L SS	
8	U-BOLT & NUT	<input checked="" type="checkbox"/> C.S <input type="checkbox"/> 304 SS <input type="checkbox"/> 316L SS	
9	U-SEAL POT	<input type="checkbox"/> ALC + C.S <input checked="" type="checkbox"/> 304 SS <input type="checkbox"/> 316L SS	
10	CONNECTION FLANGE	<input type="checkbox"/> ALC <input checked="" type="checkbox"/> 304 SS <input type="checkbox"/> 316L SS	ANSI 1-1/2" 150# RF

TAG NO.	Q'TY	MEASURING RANGE(mm)	SCALE RANGE(mm)
LI-1101C	1		
LI-1102C	1		
LI-1103C	1		
LI-1104C	1		
LI-1105C	1		
LI-1106C	1		

NOTE
1. GENERAL TOLERANCE IS ±3mm EXCEPT AS NOTED.



△	.	.			
△	.	.			
△	.	.			
△	.	.			
△	2024.08.08	1ST ISSUE	S H KIM	B S SUNG	J S YANG
NO.	DATE	REVISION	REV'D BY	CHK'D BY	APP'D BY

HITROL HITROL CO., LTD.

TITLE
TANK LEVEL GAUGE
HLT-1210

SCALE	UNIT	SHEET NO.
N.S	mm	—
PROJECT		
DRAWING NO. HLT1210-AEB-01		

This drawing is the property of HITROL and shall not be copied, communicated, or given for tiers except with our written permission.