

HITROL CO., LTD.

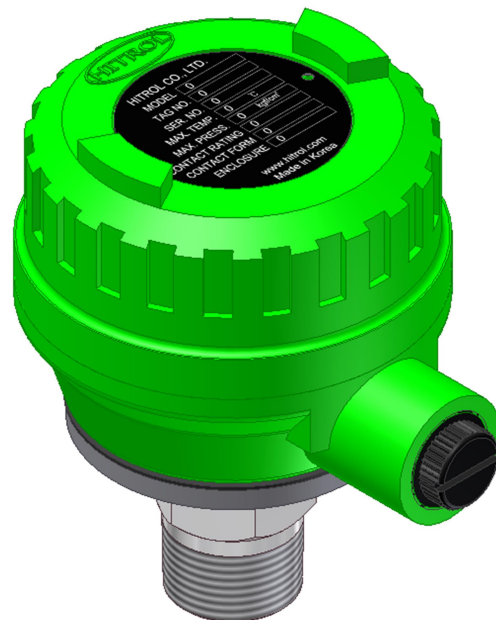
HEAD OFFICE.FACTORY.R&D INSTITUTE
HITROL CO.,LTD. 141, Palhagol-gil, Jori-eup
Paju-si, Gyeonggi-do, Korea
TEL. : (00)-82-31-950-9700
FAX. : (00)-82-31-943-5600
www.hitrol.com



CATALOGUE

Pressure Type Level Switches

HP-1A Series



Doc. no. :HP-1A_E_Rev.0

Issued date : 2024. 09

Overview The HP-1A Series is a Pneumatic Level Switch that is particularly suitable for high viscosity fluids.

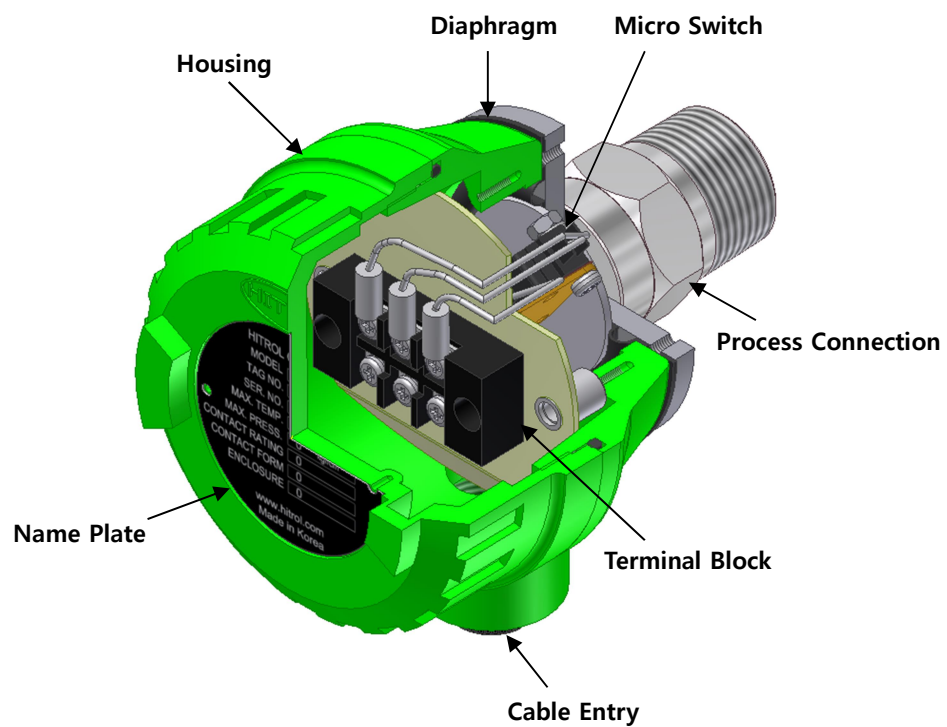
The small size makes it easy to detect the liquid level in the container of small mechanical equipment.

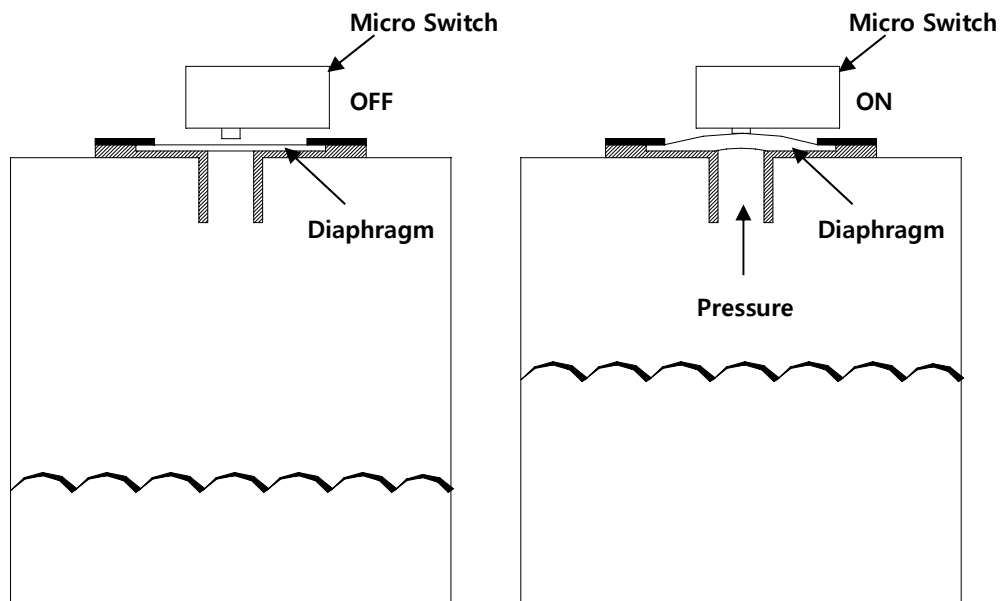
- Application**
- a variety of industrial chemical machinery equipment
 - water treatment equipment
 - Food and beverage production machines, filters, cleaners, etc.

- Characteristics**
- It is specialized in the level control of high viscosity liquids.
 - Its small size makes it easy to control the liquid level of the integrated machine facility.

Product composition and Operation Principle

As the water level increases, air pressure is delivered to the air room inside the switch unit. As the diaphragm located above it moves, it operates the micro switch and the corresponding contact point becomes It can be output to alarm and control the level.





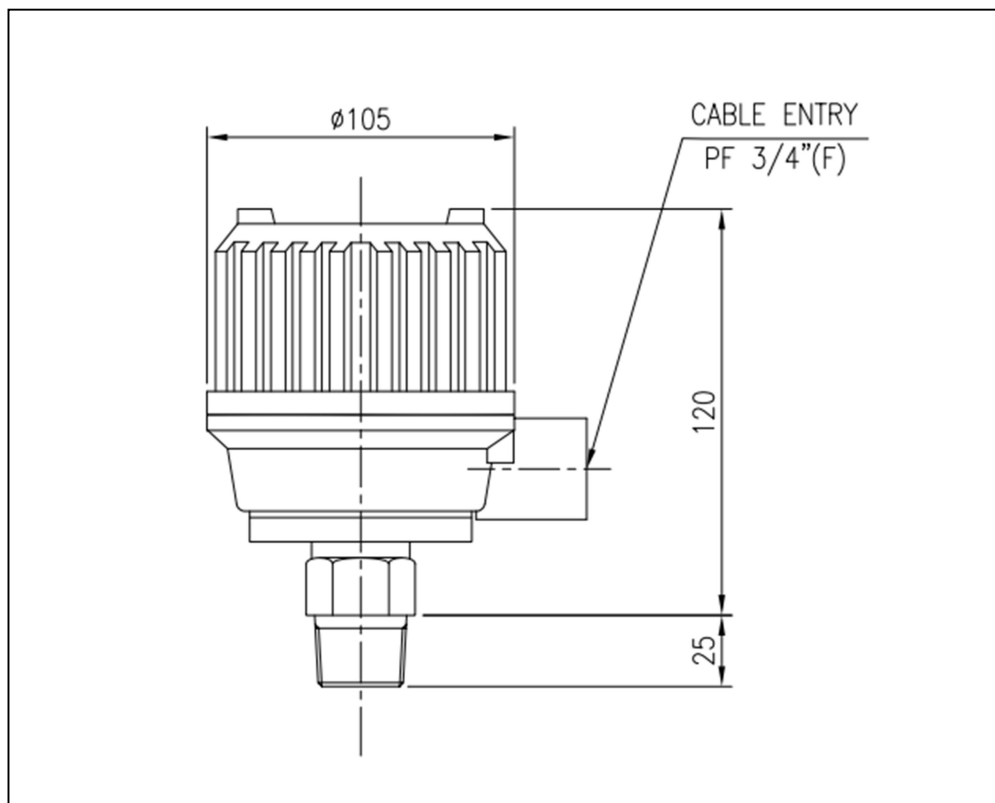
- Not working under pressure when water level is low
- As the water level rises, the switch is operated by pushing the Diaphragm under pressure.

<Operation Principle>

Specification

Model	HP-1A
Mounting	TOP , SCREW
Max. Process Press. / Max. Temperature	Up to 0.5kg/cm ² Max . 60°C
Ambient Temp.	-20°C ~ +60°C
Output Signal	1-SPDT
Enclosure	Weather-Proof (IP65)
Approvals	-20°C ~ +60°C
Process Connection	PT 1" (Std.)
Housing	ALDC 12. (Std.)
Diaphragm	Silicon Rubber
Cable Entry	PF 3/4"(F) (Std.)
Contact Rating	AC 250V, 5A / DC 125V, 0.5A

Product Dimensions



< HP-1A Dimension >

Precautions for Installation

- It shall be of the same standard when fastening flanges or screws.
- The user shall fasten the washer between bolts and nuts to prevent loosening.
- After the installation is completed and the COVER of the product is assembled, power is applied.

■ Contact information of headquarters, factories, and research institutes

Address: 141 Palhakgol-gil, Jori-eup, Paju-si, Gyeonggi-do (98) High Roll
 HITROL CO.,LTD 141, Palhakgol-road, Jori-eup, Paju-si, Gyeonggi-do, Korea
 TEL : 031-950-9700 (head office and A/S)
 Fax: 031-943-0878 /5600 (Head Office and A/S)